



Midfield Monitor

S4X-V

Product Bulletin



English

Midfield Monitor S4X-V

Description

The S4X-V has been earmarked for a vertical installation. This reference monitor features the same X-ART and 5" HexaCone-midrange as the S4X-H allowing for almost identical tonal characteristics of both speakers. This allows combinations of the different versions in bigger multi-channel applications without tonal imbalance.

Furthermore, the S4X-V features a newly developed 12" HexaCone-woofer. From the outset, this driver has been designed for optimal results in a bass-reflex enclosure with electronic correction. An exceptionally long 3" voice coil coupled with a very strong and highly effective magnet system provides for powerful, yet never overemphasized bass reproduction.

Improperly designed larger monitors are always at risk at compromising the overall sound with bass reproduction that is too intense. As in all ADAM Audio designed speakers, both versions of the S4X have been designed to combine both the power and volume of the bass (28 Hz at -3 dB point) with the highest possible precision. Combine this with the transparent high and midrange frequencies of the S4X and this will give an engineer a new quality level of control and performance for larger rooms.

X-ART

All models of the SX-Series are equipped with the new X-ART tweeter. The X-ART tweeter has a 4dB higher efficiency, a 3dB higher maximum sound pressure level, and an increase in frequency response up to 50 kHz. The newly designed broadband A/B amplifier has been developed by ADAM to perfectly match the needs and capabilities of the X-ART tweeter. The entire range of sound can be heard as never before.

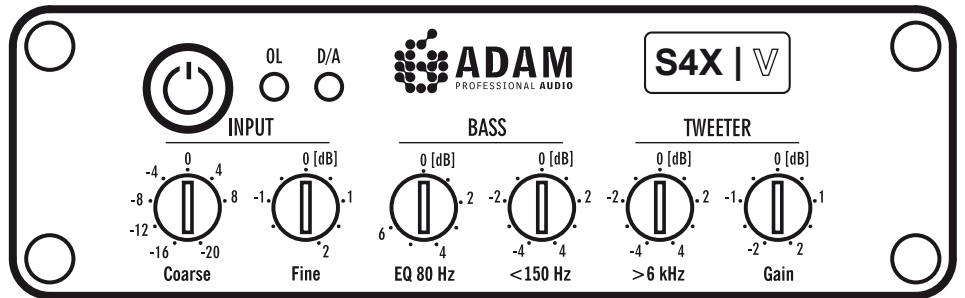
New HexaCone-woofer

The new HexaCone-woofers are designed with larger and longer voice coils that deliver more linear excursion for higher SPL max. values. A stronger magnetic structure is added as well for an optimum in efficiency and accuracy.

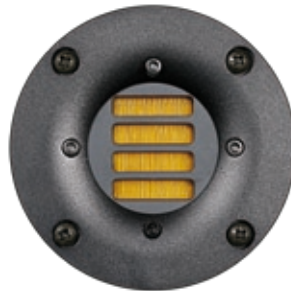
The front panel

Six controls can be found on the new front panel. Input sensitivity is handled by two controls (one for coarse settings, -20dB to +8dB and one for fine tuning in 0.5dB steps, ranging from -1.5dB to 2dB). There are two controls for the lower frequencies. One is an equalizer at 80 Hz, the second is a shelf filter for frequencies above 6 kHz.

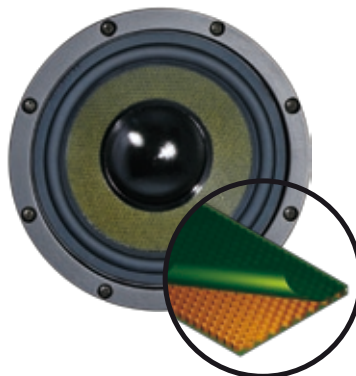
filter that allows the engineer to alter the frequencies below 150 Hz. High frequencies can also be adjusted by two different controls. The first alters the high frequency volume (-2dB to +2dB), while the second is a shelf filter for frequencies above 6 kHz.



Frontpanel



X-ART Tweeter



HexaCone woofer

Technical Data

Subwoofer	1
Type	HexaCone
Basket Ø	12 inch / 310 mm
Voice coil Ø	3 inch / 75 mm
Midrange	1
Type	HexaCone
Basket Ø	6 inch / 156 mm
Voice coil Ø	1.5 inch / 37 mm
Tweeter	1
Type	X-ART
Diaphragm area	4 inch ² / 2420 mm ²
Equiv. Diaphragm Ø	2 inch / 56 mm
Velocity trans. ratio	4:1
Diaphragm weight	17 g
General data	
Frequency resp.	28 Hz - 50 kHz
THD > 80 Hz	≤ 0.6 %
Long term output	≥ 118 dB
Max. peak	≥ 128 dB
Input impedance	10 KOhm
Weight	78.5 lb / 35,6 kg
Height x Width x Depth	27" x 14" x 17.5"
Warranty	5 years